



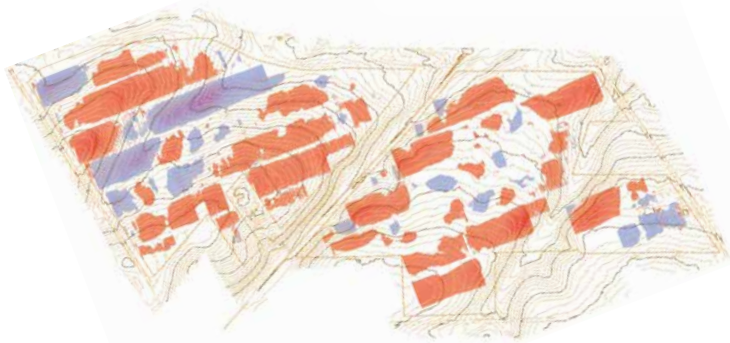
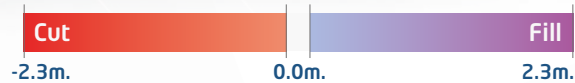
# IP System

By Solar Steel

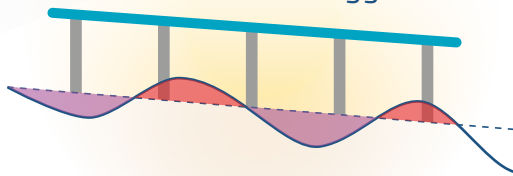
Advanced design for Layouts the implementation of trackers and fixed structures minimizing earth works in uneven ground surfaces.



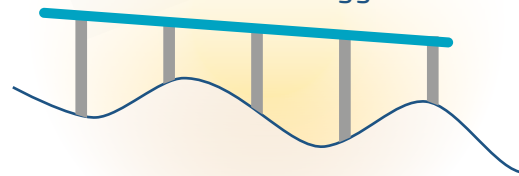
## Earthworks



Layouts **without** IPS methodology



Layouts **with** IPS methodology



## CAPEX reduction due to



### Earthwork reduction

It reduces up to 80% the volumes of earthworks due to ground grading.



### More adaptability to the terrain

It allows trackers and fixed structures to adapt to uneven ground surfaces.



### Cost control

Accurate calculation of required earthworks and piles height.



### Full traceability

It allows full traceability from the design phase to the construction phase, simplifying logistics, improving the reception process and on-site installation operations.



### Georeferencing

It exports geo-referenced data compatible with the GPS systems of the ramming machines.



### Compatibility

Compatible workflow in a BIM (Building Information Model) environment for 7D control (3D Geometry, Planning, Costs, Sustainability and Operation and Maintenance) compatible with 4.0. Industry.

