

RackSmart

Fixed structure adaptable to any module type and configuration

Solar Steel
Gonvarri Industries



LinkedIn

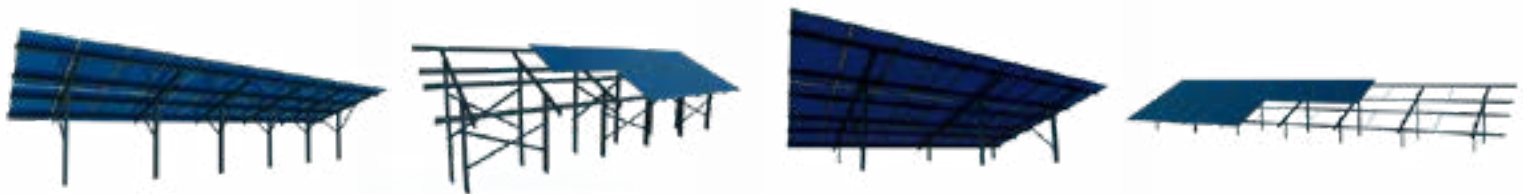


gsolarsteel.com

Fixed Structure Datasheet

MAIN FEATURES

Model	RACKSMART
Product type	Fix tilt structure
Structure configuration	Single and dual-post
Solar modules configuration	Landscape or portrait
Configuration	2P, 3P, 4L, 6L & fully adaptable according to customer needs
Supported modules/cells	Monofacial, Bifacial, Thin-film / M10, M12 and other cells
Bifacial adaptative	Fully compatible maximizing rear side production
Ground adaptability	Fully adaptable
Foundation type	Direct ramming, pre-drilling and concrete footing
Module mounting type	Bolts or clamps with integrated grounding
Steel Coating	HDG steel & Magnelis® or similar Fasteners: HDG 8.8 quality, Stainless Steel, ZN-PI
Standard corrosion protection	According to ISO 12944-2
Design codes	International Standards: Wind tunnel Test & CFD
Engineering	PE stamped drawing and calculation



SERVICES PACKAGE

Pull-out test
Training
Technical assistance

WARRANTY

Structural components
10 years
Product warranty extension
Available

SMARTCARE AFTER-SALES

Operation & Maintenance
International spare parts hubs
Technical training

CERTIFICATIONS

IEC 62817 / CE
Wind Tunnel Tested